



PERMACON
Architectural Masonry

SHERATON

More than 70 years of expertise

Elevation

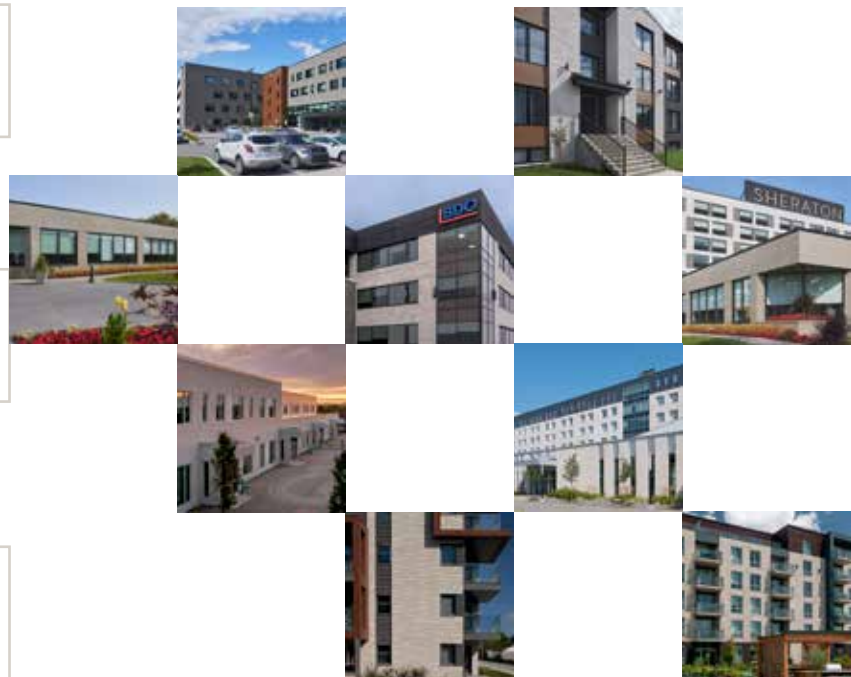
With nine plants in Ontario and Quebec, Permacon is committed to manufacturing innovative and trendsetting concrete products.

Engagement

Permacon is committed to offering high-quality products that exceed the expectations of its customers and partners.

Ecology

In its mission for a greener, more sustainable future, Permacon manufactures products locally, reducing its carbon footprint. Our circularity strategy means that concrete excess from our manufacturing process is reused.





Contents

18

Stone

- 20 Aria
- 22 Dominion
- 24 Lafitt Alto
- 26 Lafitt
- 28 Lamina
- 30 Lexa
- 32 Maestro
- 34 Mondrian

36

Brick

- 38 Cardin
- 40 Cinco Plus
- 42 Melville Norman
- 44 Melville Slik

46

Block

- 48 Colosseo Block *New*

50

Miscellaneous

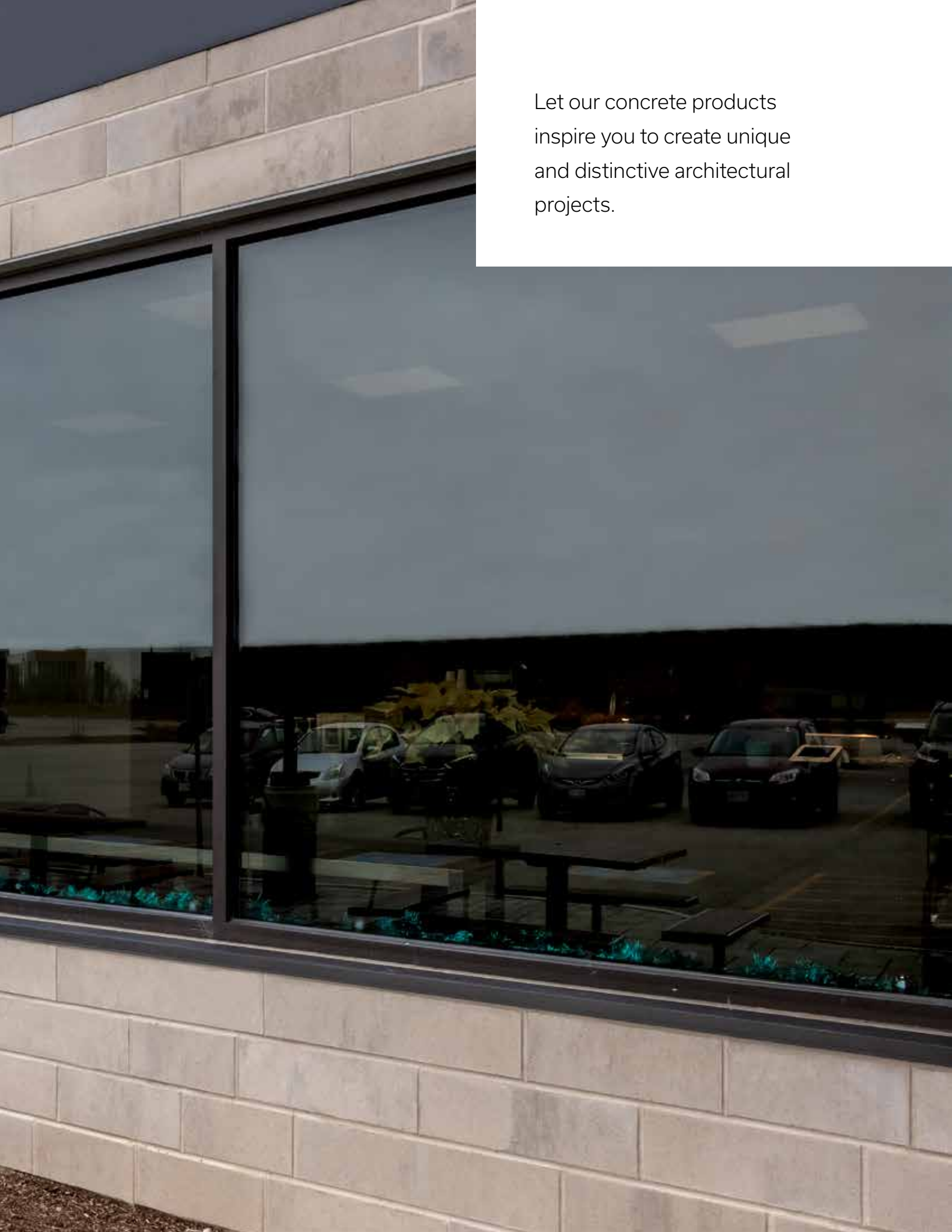
- 50 Accessories
- 52 Technical Information
- 53 Tools
- 54 Warranty

PLEASE NOTE: The colours of the products shown in this catalogue are as accurate as the photographs and printing process will allow. Since all Permacon products are made from natural materials, such as sand and stone that may change over time, colour and texture variations are to be expected. We strongly recommend that you make your final colour selection based on a current product sample rather than existing projects or the photographs shown here.

café



Let our concrete products
inspire you to create unique
and distinctive architectural
projects.











OPEN 7 DAYS A WEEK
519-624-9760





Perth County
Paramedic Services

Services



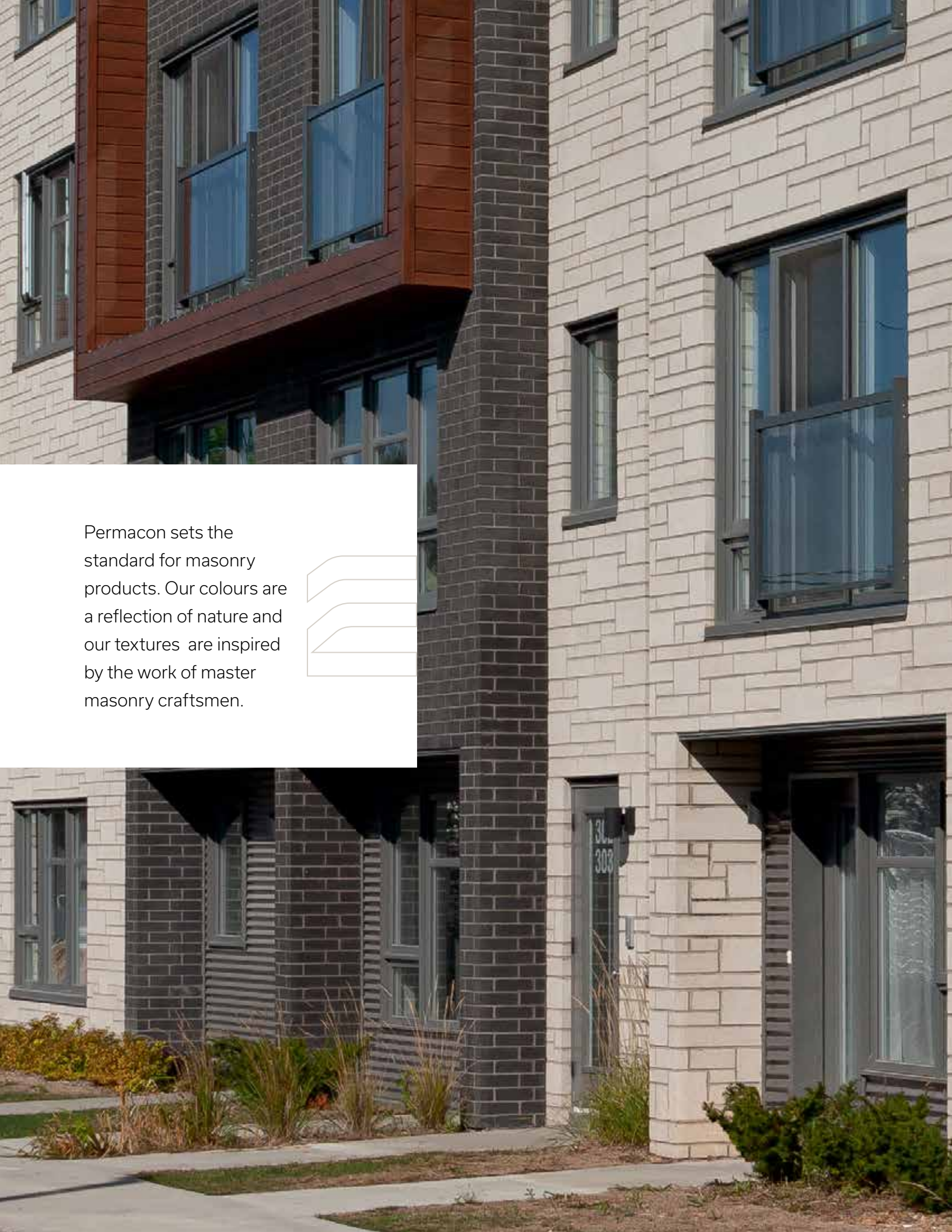
Mondrian Stone Blizzard P 34 | **Melville Slik Brick** Rockland Black P 44





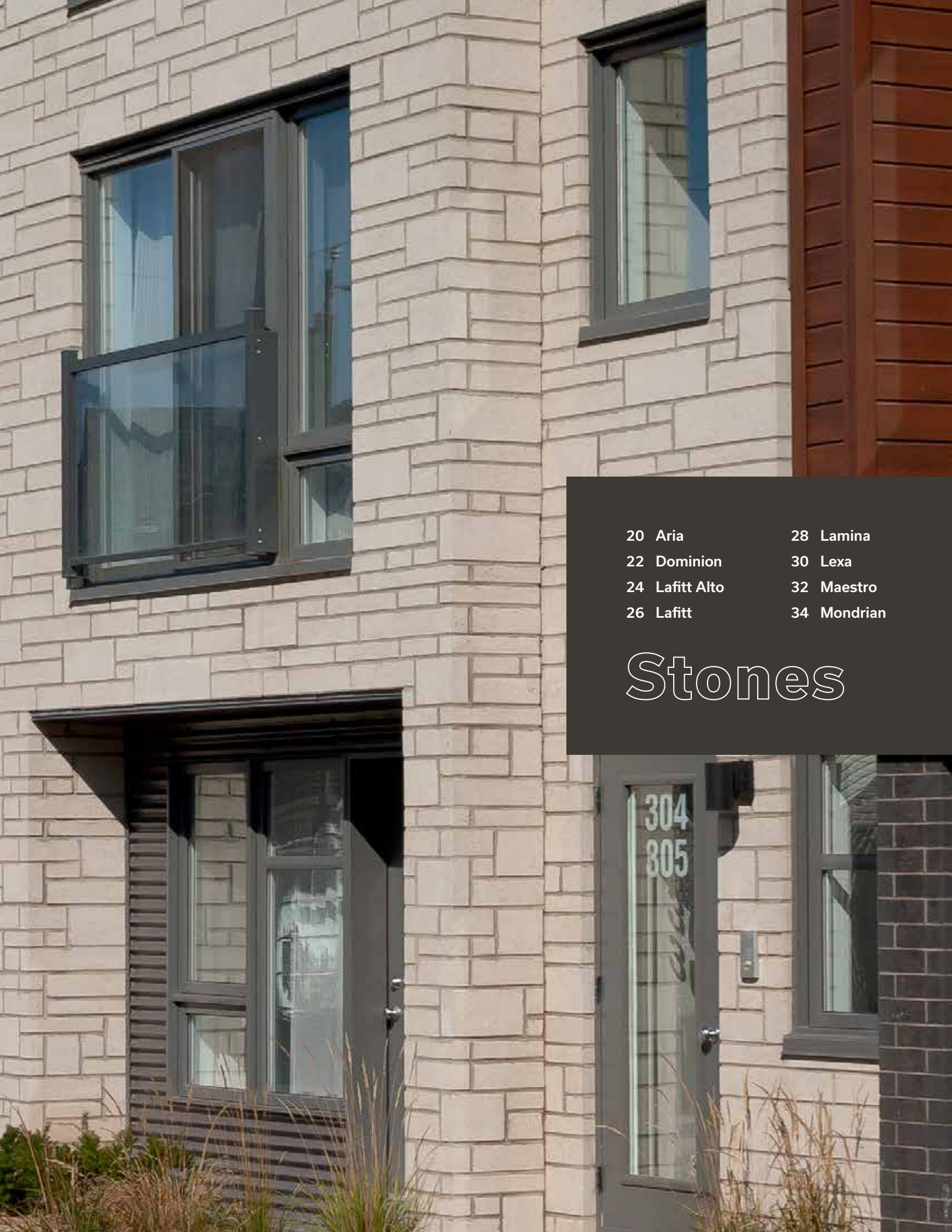
Aria Stone Heron P 20





Permacon sets the standard for masonry products. Our colours are a reflection of nature and our textures are inspired by the work of master masonry craftsmen.





20 Aria

22 Dominion

24 Lafitt Alto

26 Lafitt

28 Lamina

30 Lexa

32 Maestro

34 Mondrian

Stones

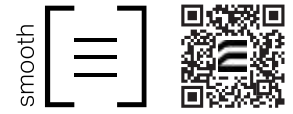


BDO





Aria Stone



Blizzard



Heron

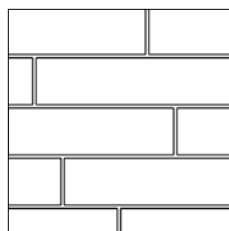


Range Newport Grey

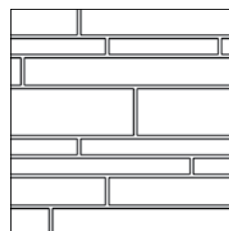


Rockland Black

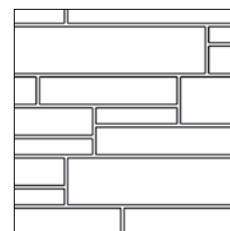
Laying Patterns



Linear - Large Stones



Linear Mix



Modular Mix

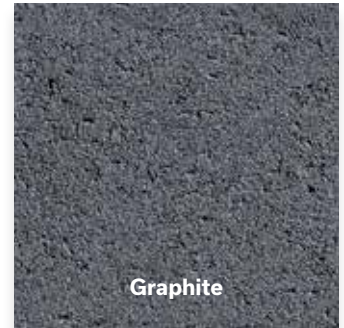
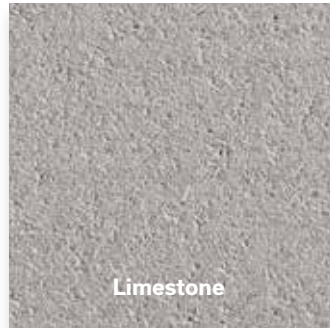




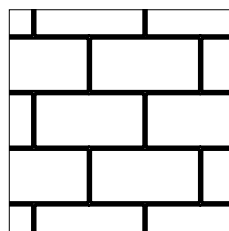
Dominion Stone



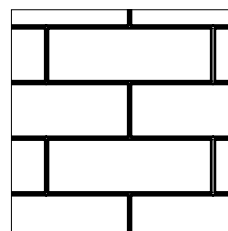
Enhances any project with its distinctive appearance and timeless appeal.



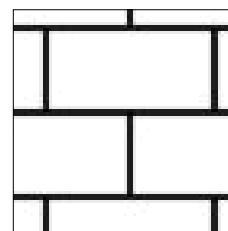
Laying Patterns



Linear
8 in. x 16 in.



Linear
8 in. x 24 in.



Linear
12 in. x 24 in.



Lafitt Alto Stone



Range Margaux Beige



Range Chambord Grey



Range Newport Grey

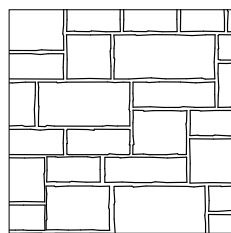


Range Scandina Grey

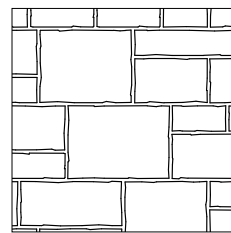


Rockland Black

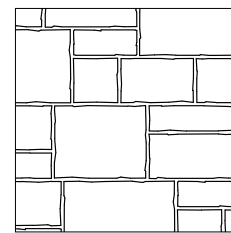
Laying Patterns



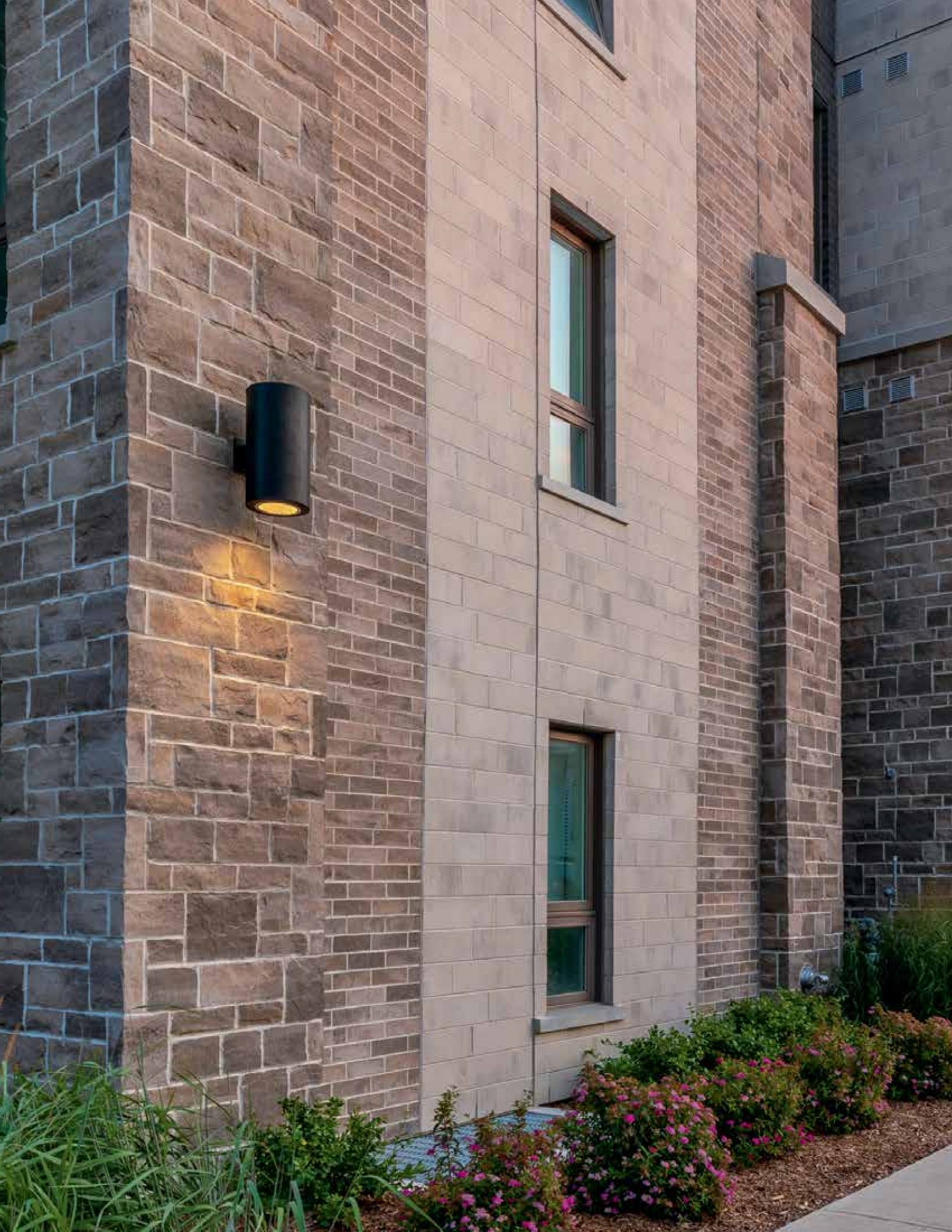
Modular
10% Large Stones



25% Large Stones



50% Large Stones

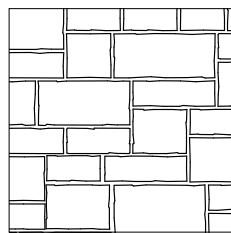




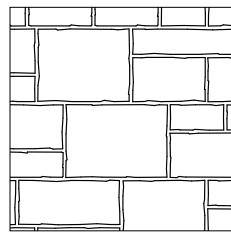
Lafitt Stone



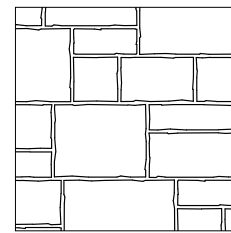
Laying Patterns



Modular
10% Large Stones



25% Large Stones



50% Large Stones





Lamina Stone



Range **Margaux Beige**

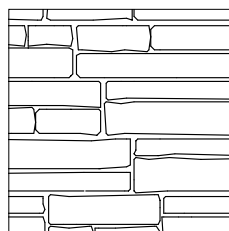


Range **Newport Grey**

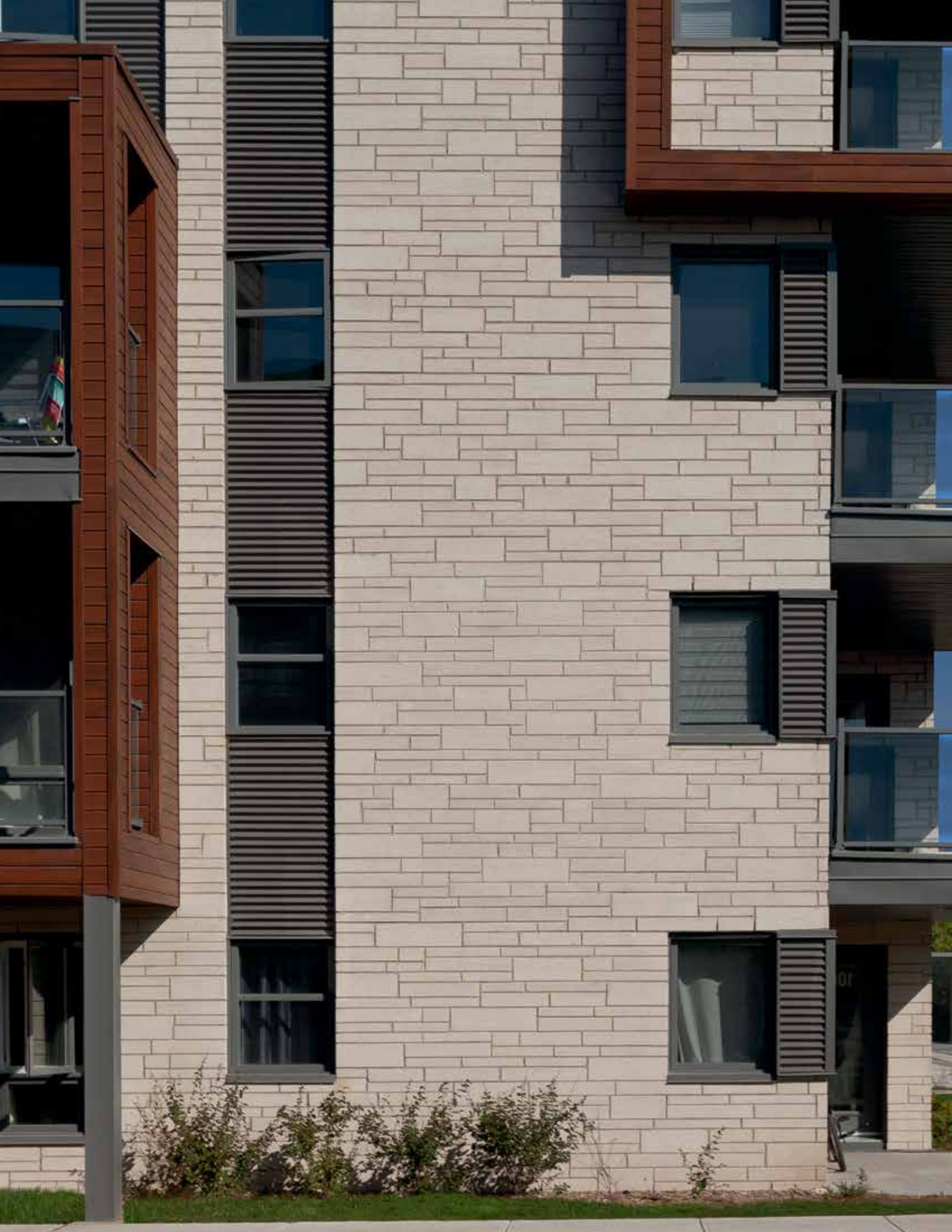


Rockland Black

Laying Pattern



Running Bond





Lexa Stone



Cameo Beige

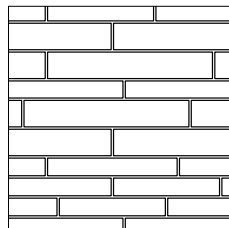


Alpine Grey

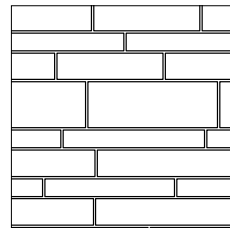


Rockland Black

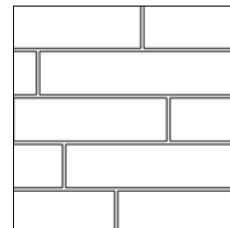
Laying Patterns



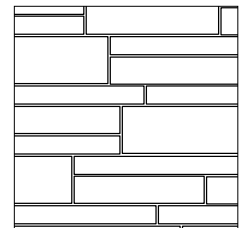
Linear
Small/Medium Stones



Linear
33% Large Stones



Linear
100% Large Stones



Modular
33% Large Stones





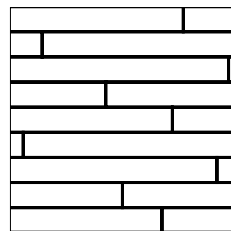
Maestro Stone



- ↪ Fully finished corners
- ↪ Perfect match to Melville Pavers and Slabs



Laying Pattern



Linear
Random Coursed





Mondrian Stone



- Allows for a modular or linear installation
- Matches perfectly with our landscaping products, including Trafalgar Paver, Mondrian Pavers and Slabs



Blizzard



Range **Amber Beige**



Range **Margaux Beige**

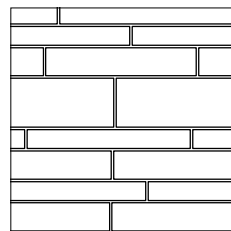


Range **Scandina Grey**

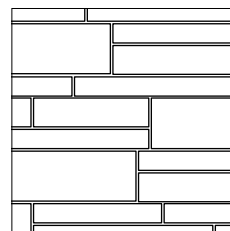


Range **Newport Grey**

Laying Patterns

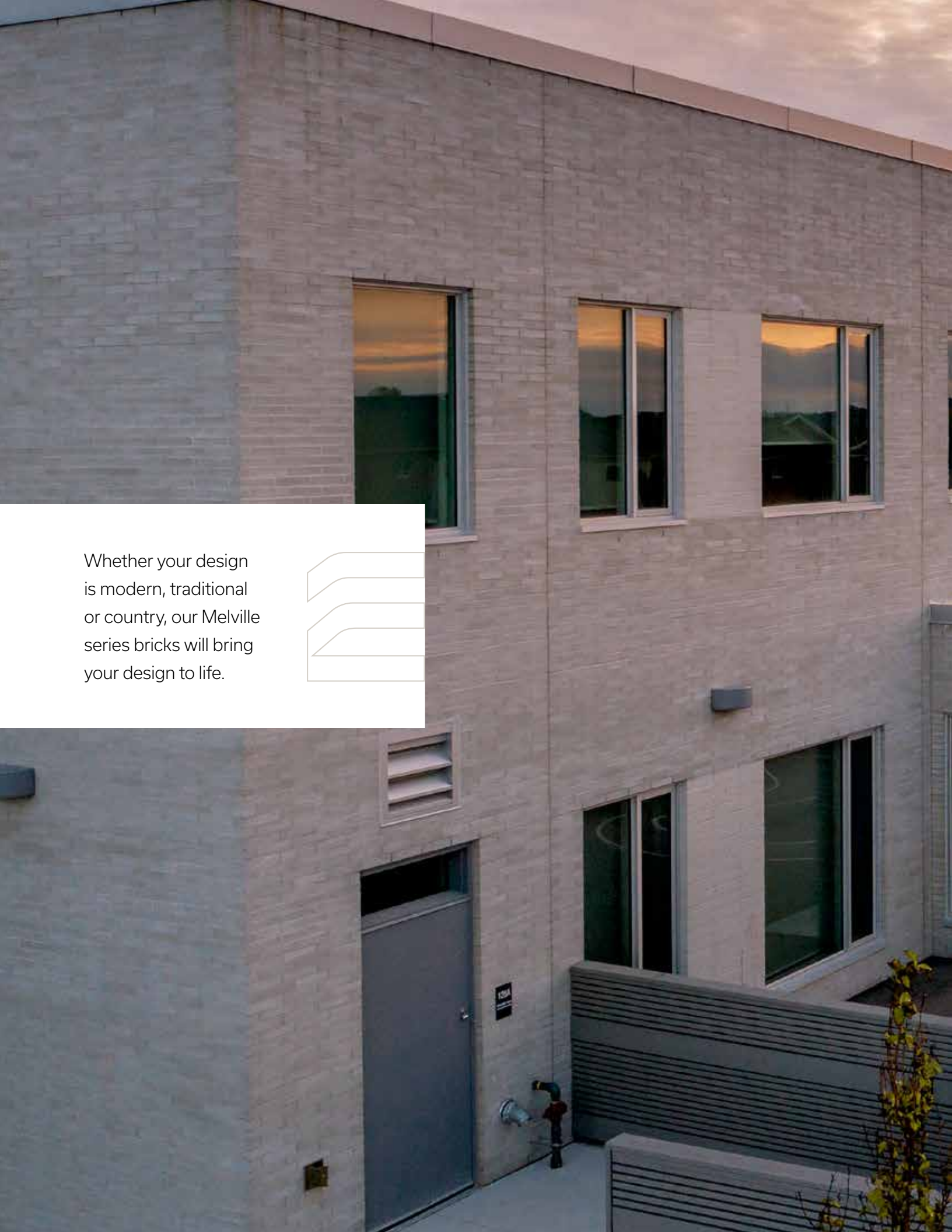


Linear



Modular

Whether your design is modern, traditional or country, our Melville series bricks will bring your design to life.





38 Cardin

42 Melville Norman

40 Cinco Plus

44 Melville Slik

Bricks





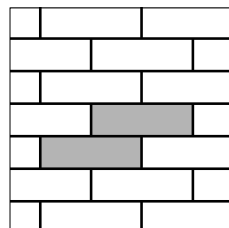
Cardin Brick



- Solid brick unit
- Corner unit on each brick
- Optimised format for cost effectiveness (material and labour)



Laying Pattern



Running Bond



Cinco Plus Brick

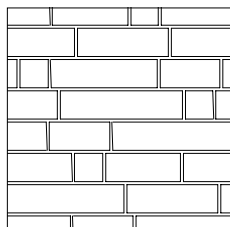


* Range Grey and Black, Range Lennox Grey and Rockland Black are not available in the Greater Toronto Area

Cinco Plus Stone

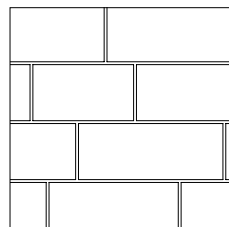


Laying Pattern - Brick

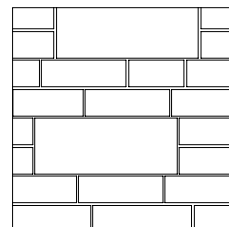


Cinco Plus Brick
Running Bond

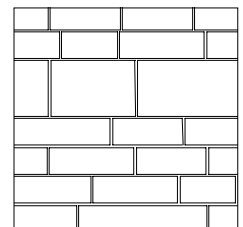
Laying Patterns - Stone



Cinco Plus Stone
Linear Irregular



Cinco Plus Stone
Modular Irregular
with Cinco Brick



Cinco Plus Stone Linear
Irregular with Cinco Brick

SHERATON





Melville Norman Brick



- Thin, elongated format (300 mm nominal)
- Precise dimensional stability through a manufacturing process that prevents warping
- Cores in the brick make it easier to install and provide increased mortar adhesion



Alpine Grey

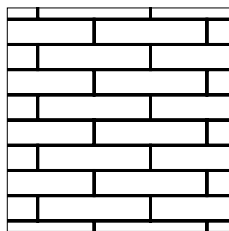


Sterling Grey

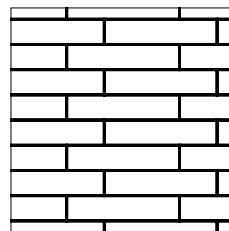


Rockland Black

Laying Patterns



Running Bond



1/3 Bond

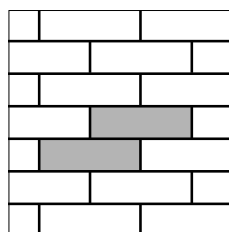




Melville Slik Brick



Laying Pattern



Running Bond





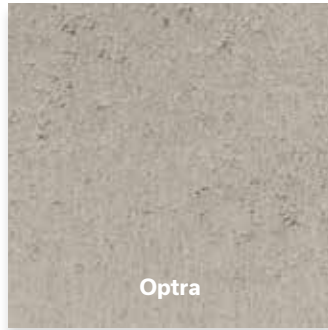
48 Colosseo *New*

Block



New

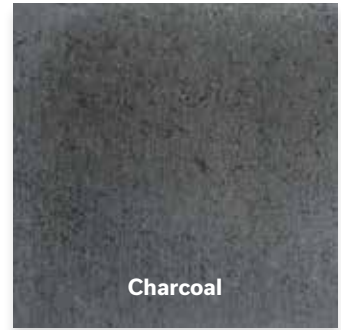
Colosseo Block



Optra

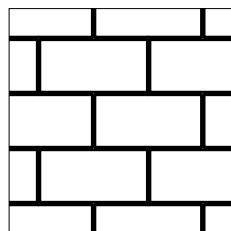


Sterling

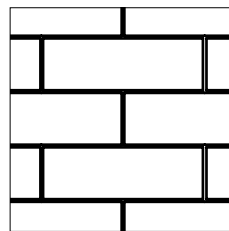


Charcoal

Laying Patterns



Running Bond
8 in. x 16 in.

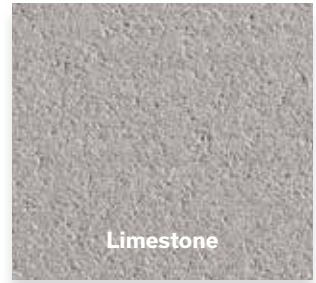


Running Bond
8 in. x 24 in.

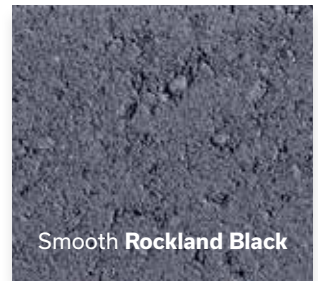
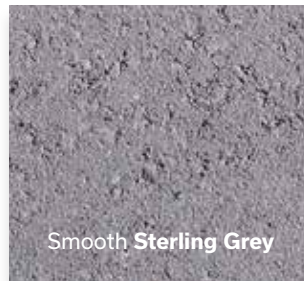


Accessories

Dominion Jamb and Reversible Window Sill



Cardiff Window Sill - Smooth



Cardiff Window Sill - Chiselled



Technical Information for Stone, Brick, Blocks and Accessories

Aria Stone

90 x 60 mm x var.	3 1/2 x 2 3/8 in. x var.	A
90 x 102 mm x var.	3 1/2 x 4 in. x var.	B
90 x 172 mm x var.	3 1/2 x 6 3/4 in. x var.	*C

Mix pallet made up of A, B and C units.

* Sold Separately



Cinco Plus Stone

90 x 196 mm x var.	3 1/2 x 7 23/32 in. x var.
--------------------	----------------------------



Dominion Stone

90 x 190 x 390 mm	3 1/2 x 7 1/2 x 15 3/8 in.	*A
90 x 190 x 590 mm	3 1/2 x 7 1/2 x 23 1/4 in.	*B
90 x 290 x 590 mm	3 1/2 x 11 7/16 x 23 1/4 in.	*C

Graphite and Milano colours are available in B and C units only.

* Sold Separately



Lafitt Alto Stone

90 x 102 mm x var.	3 1/2 x 4 in. x var.	A
90 x 178 mm x var.	3 1/2 x 7 in. x var.	B
90 x 292 mm x var.	3 1/2 x 11 1/2 in. x var.	*C

* Sold Separately



Lafitt Stone

90 x 102 mm x var.	3 1/2 x 4 in. x var.	A
90 x 178 mm x var.	3 1/2 x 7 in. x var.	B
90 x 292 mm x var.	3 1/2 x 11 1/2 in. x var.	*C

* Sold Separately



Lamina Stone

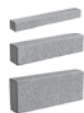
90 x 95 mm x var.	3 1/2 x 3 3/4 in. x var.
-------------------	--------------------------



Lexa Stone

90 x 76 mm x var.	3 1/2 x 3 in. x var.	A
90 x 114 mm x var.	3 1/2 x 4 1/2 in. x var.	B
90 x 198 mm x var.	3 1/2 x 7 13/16 in. x var.	*C

* Sold Separately



Maestro Stone

90 x 90 x 890 mm	3 1/2 x 3 1/2 x 35 in.
------------------	------------------------



Mondrian Stone

90 x 76 mm x var.	3 1/2 x 3 in. x var.	A
90 x 114 mm x var.	3 1/2 x 4 1/2 in. x var.	B
90 x 198 mm x var.	3 1/2 x 7 13/16 in. x var.	*C

* Sold Separately



Cardin Brick

90 x 79 x 257 mm	3 1/2 x 3 1/8 x 10 1/8 in.
------------------	----------------------------



Cinco Plus Brick*

90 x 92 mm x var.	3 1/2 x 3 5/8 in. x var.
-------------------	--------------------------



* Range Grey and Black, Range Lennox Grey and Rockland Black are not available in the Greater Toronto area

Melville Norman Brick

90 x 57 x 290 mm	3 1/2 x 2 1/4 x 11 7/16 in.
------------------	-----------------------------



Melville Slik Brick

90 x 79 x 257 mm	3 1/2 x 3 1/8 x 10 1/8 in.	A
90 x 79 x 257-212 mm	3 1/2 x 3 1/8 x 10 1/8-8 3/8 in.	B



Colosseo Block

90 x 190 x 390 mm	4 x 8 x 16 in.	*A
90 x 190 x 590 mm	4 x 8 x 24 in.	*B

* Sold Separately



Dominion Window Sill

145 x 75 x 914 mm	5 11/16 x 3 x 36 in.
-------------------	----------------------



Jambage Dominion

89 x 254 x 610 mm	3 1/2 x 10 x 24 in.
-------------------	---------------------



Cardiff Smooth Window Sill

150 x 79 x 948 mm	5 7/8 x 3 1/8 x 37 3/8 in.
-------------------	----------------------------



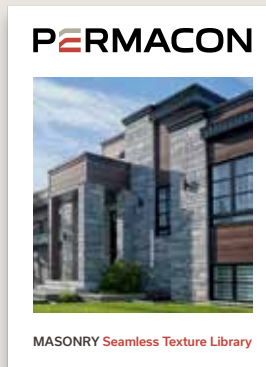
Cardiff Chiselled Window Sill

150 x 79 x 948 mm	5 7/8 x 3 1/8 x 37 3/8 in.
-------------------	----------------------------

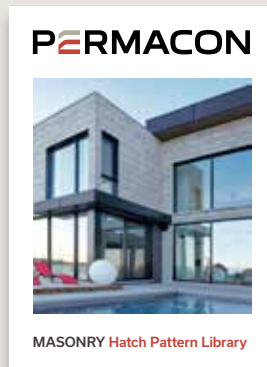


A unique experience for professionals

Discover our dedicated **Pro Zone**. Check out our tools and resources, take advantage of our specialized training courses, and more. Turn your ideas into reality with Permacon!



MASONRY Seamless Texture Library



MASONRY Hatch Pattern Library

Visual Resources

Explore our online directories of masonry hatch patterns and textures, making it easy to create visually rich, detailed designs.



Lunch & Learn

We offer various seminars on our products featuring technical and design features, specification options, installation guidelines and our services to assist with successful project design.



The samples you need

Make sure you choose the right material for your project by ordering samples of our products for on-site evaluation.



State-of-the-art tools

Access Permacon seamless textures and hatch patterns for use in your design software.



PERMACON

Warranty

Masonry Products for Institutional, Commercial and Industrial Use

Permacon's warranty applies to landscaping and masonry products including Suretouch intended for institutional, commercial and industrial use¹. This warranty statement affirms that products manufactured by Permacon meet the requirements of the Canadian Standard Association (CSA) and American Society for Testing and Materials (ASTM).

Permacon guarantees that, as of the date of delivery, our concrete products are free from manufacturing defects. Provided the conditions set forth below are met, Permacon guarantees the structural integrity of the concrete in its landscaping products for a period of 5 years from the date of purchase of the product. The masonry products will be guaranteed for a period of 50 years. The warranty applies to normal, non-abusive use of the product.

IN ALL CASES DETAILED BELOW, THE WARRANTY IS LIMITED TO THE PRODUCTS' MARKET VALUE.

How do I make a claim?



permacon.ca/en/warranty/



Proof of purchase will be required to proceed with a claim request. No claims will be accepted without proof of purchase.²

All claims must be reported within 15 days of the discovery of a product's defect. To validate a claim, a Permacon representative will arrive to inspect the defective products in order to confirm whether the claim is admissible. Therefore, it is essential to provide Permacon with the necessary access to inspect and take photos of the products in question.

This warranty is the only one that is presently offered. Because Permacon continually improves and modifies its products, it may alter and discontinue products at any time, and therefore may replace warranty-covered products with products of similar quality or offer monetary compensation if the products under warranty have been discontinued or are no longer on the market while the warranty is active.

In the event that a product is found to be non-conforming by Permacon or an authorized representative of the company, and in order to proceed with compensation, Permacon will take into account the number of months during which the

landscaping or masonry products were in the possession of the owner or their contractor, up to the date of the claim, and will prorate the amount of the payment or replacement to be made accordingly.

For example: if the purchaser makes a warranty claim in the last month of the 2nd year of the warranty (i.e., the 24th month), the manufacturer, at its sole discretion, shall either :

- Provide a replacement for the product in question if still available (only the defective product will be replaced);
- Return 36/60 of the price paid for the products to the owner. No labor, transportation, or other compensation costs will be covered by Permacon.

Transferability

The warranty is transferable. Proof of warranty registration will still be required in the event of a claim. The prorated period will be based on the warranty period remaining as an assignee, if the purchaser transfers the limited warranty to a subsequent owner, as described above.

¹ The following areas are defined as institutional, commercial and industrial: public areas, businesses, family dwelling of six units or more, and all other non-residential areas

² The following documents are considered valid proof of purchase: an invoice from an authorized Permacon distributor or an invoice from a landscape contractor, general contractor, or mason

Exclusions

A landscaping or masonry product installed on an area of more than **100 square feet** confirms the acceptance of the product received on site and that no claim can be made to Permacon regarding the colour, size, or texture of the product.

This limited warranty excludes all products not supplied by Permacon, as well as any defects, failures, or damages that may result from the actions listed below:

- Contact with chemicals or cleaning products;
- Damage caused by pressure washers;
- Improper installation or other construction activities that do not comply with the installation standards established by ICPI, NCMA or IMQ, the National Building Code or the installation methods and tips recommended by Permacon. The installation guides provided by Permacon represent certain installation situations and are not exhaustive. It is therefore strongly recommended that you consult a qualified professional to ensure the proper installation of Permacon products on a specific job site;
- Defective design or construction resulting in sagging, shifting, or failure;
- Breakage due to shock, impact, or excessive load during handling, use, or transportation;
- Natural disaster or other uncontrollable event;
- Breakage and damage to products caused by soil movement or building movement as well as misuse of construction, compaction, or snow removal equipment. The warranty does not cover surface deterioration caused by the misuse of sodium chloride (NaCl) to de-ice pavers, slabs, or steps;
- The use of sodium chloride (NaCl) on the following products:
 - Step Valentia;
 - Valentia Block;
- Be.OnStone and Mirage products sold by Permacon.

Installation

When installing masonry products, it is vital that the work be cleaned to remove residue and contaminants left on the stone or brick. Permacon accepts no responsibility for stains and colour changes caused by installation residue or the consequences of cleaning said residue.

Colour

The presence of natural ingredients used in the manufacturing process varies from one product to another. Therefore, the product received on the job site will not be completely identical to the products presented in our commercial presentations (catalogs, samples, displays). Any difference in colour cannot be attributed to the guarantee.

Photos of our products in landscape and masonry brochures, as well as in displays such as masonry panels and landscape racks at our distributors, are not an exact representation of the products that will be delivered to the job site. Permacon offers a variety of products with different colours to reproduce the appearance of natural stone. It is therefore strongly recommended that you view several products directly from your authorized Permacon distributor to see all available colours.

It is the purchaser's responsibility to approve the products delivered to the job site prior to installation and to ensure that the colour is satisfactory. It is also recommended to mix products from different pallets received on site. Since variations in colour shades are a natural phenomenon, Permacon does not guarantee colour uniformity between different pallets on the same job site. Product installation constitutes acceptance.

Polymeric film

A whitish polymeric film can be found on the surface of our products. This is the result of an inadequate use of polymeric sand. Improper cleaning of slabs and pavers prior to the application of water on the products' surface can cause this whitish polymeric film. This film does not affect the structural integrity of the product. Permacon cannot be held responsible for this phenomenon, which is not covered by the warranty.

Efflorescence

White traces on the surface of the product are caused by a natural phenomenon called efflorescence. More visible on darker products, efflorescence affects neither the intrinsic technical qualities nor the structural integrity of our products. The possible appearance of efflorescence cannot be the subject of any guarantee on our part. In most cases, efflorescence disappears by itself over time.



Consult your PERMACON REPRESENTATIVE
for more information.



permacon.ca

1 888 PERMACON

PERMACON
A CRH COMPANY